

12 Pretty Triangle Shawl



INTERMEDIATE

MEASUREMENTS

Approx 56 ins [142 cm] wide x 26 ins [66 cm] deep at center back.

TENSION

26 sts and 32 rows = 4 ins [10 cm] in stocking st.

MATERIALS

Patons® Lace

(85 g/3 oz; 455 m/498 yds)



33315 (Sachet)

1 ball

Size 3.5 mm (U.S. 4) circular knitting needle 36 ins [90 cm] long **or size needed to obtain tension.**



STITCH GLOSSARY

See page 67 for Helpful Hints.

Alt = Alternate(ing).

Approx = Approximately.

Beg = Beginning.

Cont = Continue(ity).

Inc = Increase 1 stitch by knitting into front and back at next stitch.

K = Knit.

K2tog = Knit next 2 stitches together.

Pat = Pattern.

Pss = Pass slipped stitch over.

Rep = Repeat.

RS = Right side.

Sl1 = Slip next stitch knitwise.

Ssk = Slip next 2 stitches knitwise one at a time. Pass them back onto left-hand needle, then knit through back loops together.

St(s) = Stitch(es).

WS = Wrong side.

Yo = Yarn over.



INSTRUCTIONS

Beg at center back, cast on 7 sts.

(Chart I is shown on page 64).

1st row: (RS). K2. (yo. K1) twice. Place marker on last st (center st). yo. K1. yo. K2. 11 sts.

2nd and alt rows: K2. Purl to last 2 sts. K2.

3rd row: K2. (yo. K3. yo. K1) twice. K1. 15 sts.

5th row: K2. (yo. K5. yo. K1) twice. K1. 19 sts.

7th row: K2. *yo. K1. yo. ssk. K1. K2tog. (yo. K1) twice. Rep from * once more. K1. 23 sts.

9th row: K2. *yo. K3. yo. Sl1. K2tog. pssso. yo. K3. yo. K1. Rep from * once more. K1. 27 sts.

11th row: K2. *yo. K3. K2tog. yo. K1. yo. ssk. K3. yo. K1. Rep from * once more. K1. 31 sts.

13th row: K2. *(yo. K1. yo. ssk. K1. K2tog) twice. (yo. K1) twice. Rep from * once more. K1. 35 sts.

15th row: K2. *(yo. K3. yo. Sl1. K2tog. pssso) twice. yo. K3. yo. K1. Rep from * once more. K1. 39 sts.

17th row: K2. *yo. K3. (K2tog. yo. K1. yo. ssk. K1) twice. K2. yo. K1. Rep from * once more. K1. 43 sts.

19th row: K2. *yo. K1. yo. ssk. K1. (K2tog. yo. K1. yo. ssk. K1) twice. K2tog. (yo. K1) twice. Rep from * once more. K1. 47 sts.

20th row: K2. Purl to last 2 sts. K2.

15th to 20th rows form Lace Leaf Pat.

Cont in pat, inc 4 sts on next and every following alt row as before, noting that instructions in () will be worked one more time in each repeat until there are 207 sts, ending with a WS row.



If working from Chart, note that sts in red box will be worked one more time in each repeat until there are 207 sts, ending with a WS row.

Next row: (RS). K2. yo. Purl to center marked st. yo. K1. yo. Purl to last 2 sts. yo. K2. 211 sts.

Next row: Knit.

Next row: K2. yo. Purl to marked center st. (yo. K1) twice. Purl to last 2 sts. yo. K2. 215 sts.

Next row: Knit.

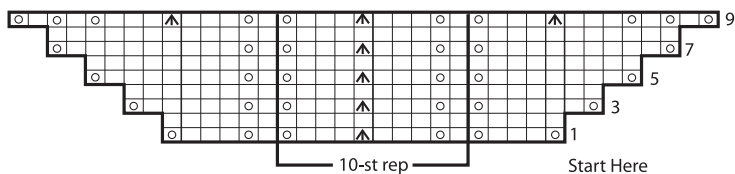
Border: (Chart II is shown on page 64).

1st row: K2. yo. K3. yo. *K1. yo. K3. Sl1. K2tog. pssso. K3. yo.** Rep from * to 2 sts before marked center st. (K1. yo) twice. K1 (center st). yo. K1. yo. Rep from * to ** to last 6 sts. K1. yo. K3. yo. K2. 223 sts.

2nd and alt rows: K2. Purl to last 2 sts. K2.
3rd row: K2. yo. K5. yo. *K1. yo. K3. Sl1. K2tog. pssso. K3. yo.** Rep from * to 4 sts before marked center st. K1. yo. K3. yo. K1 (center st). yo. K3. yo. Rep from * to ** to last 8 sts. K1. yo. K5. yo. K2. 231 sts.
5th row: K2. yo. K7. yo. *K1. yo. K3. Sl1. K2tog. pssso. K3. yo.** Rep from * to 6 sts before marked center st. K1. yo. K5. yo. K1 (center st). yo. K5. yo. Rep from * to ** to last 10 sts. K1. yo. K7. yo. K2. 239 sts.

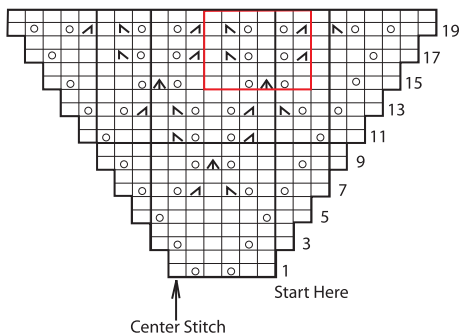
7th row: K2. yo. K9. yo. *K1. yo. K3. Sl1. K2tog. pssso. K3. yo.** Rep from * to 8 sts before marked center st. K1. yo. K7. yo. K1 (center st). yo. K7. yo. Rep from * to ** to last 12 sts. K1. yo. K9. yo. K2. 247 sts.
9th row: K2. yo. K1. yo. *K1. yo. K3. Sl1. K2tog. pssso. K3. yo.** Rep from * to 10 sts before marked center st. K1. yo. K3. Sl1. K2tog. pssso. (K1. yo) 3 times. K1 (center st). (yo. K1) 3 times. Sl1. K2tog. pssso. K3. yo. Rep from * to ** to last 4 sts. (K1. yo) twice. K2. 255 sts.
10th row: K2. Purl to last 2 sts. K2.
 Rep 1st to 10th rows once more (increasing sts as before). Cast off **loosely**. 🏠

Chart II








Note: Chart I shows half of Shawl. Pat is repeated as mirror image after center st for opposite side.

Chart I



Key

-  = Knit on RS rows. Purl on WS rows.
-  = yo
-  = K2tog
-  = ssk
-  = Sl1. K2tog. pssso.