

GOTHIC REVIVAL SHAWL
BY LUCKY FIND SALVAGE COMPANY



Suggested Yarn: Noro Silver Thaw in color of choice. Size shown used 2 skeins @ 480 yards., and about 20 yards of a contrasting color for the last two rows and bind-off. #11 Colorway shown.

Needles: US #9/ 5.5mm

Gauge: 12 stitches and 16 rows in 4" of stockinette, blocked.

Finished size shown: 72" x 36", blocked.

As with all top-down triangle shawls, you can make this as big as you want to, as long as you end with the proper pre-scallop row sequence.

GOTHIC REVIVAL SHAWL

BY LUCKY FIND SALVAGE COMPANY

	38	37	36	35	34	33	32	31	30	29	28	27	26	25	24	23	22	21	20	19	18	17	16	15	14	13	12	11	10	9	8	7	6	5	4	3	2	1			
	⌘	○						B	○	↖	B	○	↗	○	B	↖	○	B				B	○	↖	B	○	↗	○	B	↖	○	B						○	36		
		⌘	○				B	○	↖	○	↖	○	↖	○	↖	○	B		B	○	↖	○	↖	○	↖	○	↖	○	↖	○	B					○			34		
			⌘	○	↖	○				○	↖	○	↖	○	↖	○	B	↖	○	↖	○	B		○	↖	○	↖	○	↖	○	↖	○	↖	○	↖	○			○		32
				⌘	○	↖	○			○	B		↖	○	B	↖	○	↖	○	↖	○	↖	○	↖	○	B	↖	○	B	↖	○	↖	○	↖	○					30	
					⌘	○				B	○	↖	○	B		○	↖	○	↖	○	↖	○	↖	○	↖	○	↖	○	↖	○	B									28	
						⌘	○			B	○	↖	○	↖	○	B	↖	○	B		B	○	↖	B	○	↖	○	↖	○	↖	○	↖	○	↖	○					26	
							⌘	○		○	↖	B	↖	○	B	↖	○	B	↖	○	↖	○	B	↖	○	↖	○	↖	○	↖	○	↖	○	↖	○					24	
								⌘	○		B	○	↖	○	B	↖	○	B			B	○	↖	B	○	↖	○	↖	○	↖	○	↖	○	↖	○					22	
									⌘	○		↖	○	↖	○	B	↖	○	B	○	↖	○	↖	○	↖	○	↖	○	↖	○	↖	○	↖	○						20	
										⌘	○		↖	○		○	↖	○	↖	○	↖	○	↖	○	↖	○	↖	○	↖	○	↖	○	↖	○						18	
											⌘	○		↖	○	↖	○	↖	○	↖	○	↖	○	↖	○	↖	○	↖	○	↖	○	↖	○							16	
												⌘	○		↖	○	↖	○	↖	○	↖	○	↖	○	↖	○	↖	○	↖	○	↖	○	↖	○						14	
													⌘	○		↖	○	↖	○	↖	○	↖	○	↖	○	↖	○	↖	○	↖	○	↖	○							12	
														⌘	○		↖	○	↖	○	↖	○	↖	○	↖	○	↖	○	↖	○	↖	○	↖	○						10	
															⌘	○							○		○														8		
																⌘	○						○																6		
																	⌘	○					○																4		
																		⌘	○				○																2		

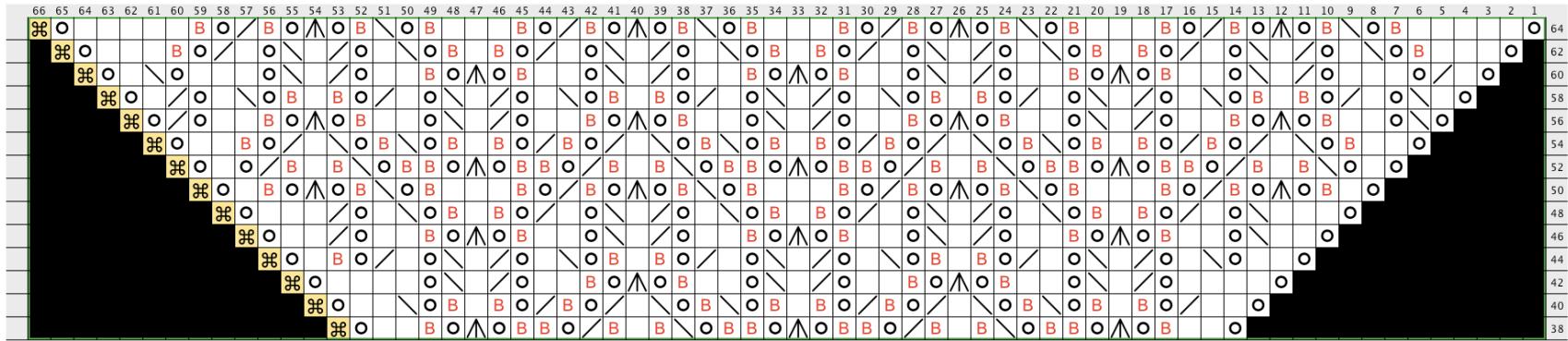
Created in Knit Visualizer (www.knitfoundry.com)

CHART A: Beginning of Shawl

Note: Knitting through the back loop as indicated in the chart keeps the pattern crisp looking.

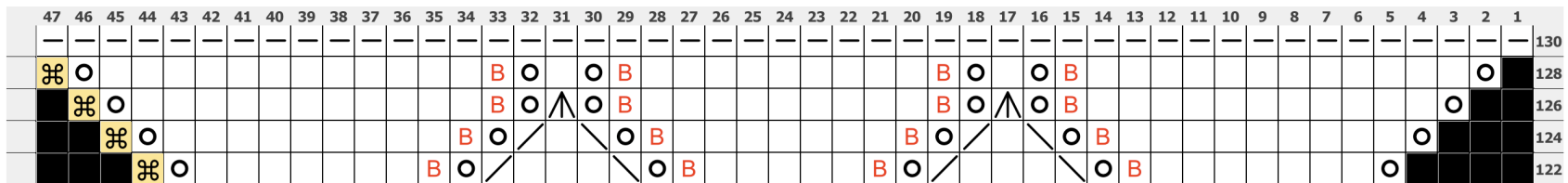
GOTHIC REVIVAL SHAWL

BY LUCKY FIND SALVAGE COMPANY



© 2009 Lucky Find Salvage Company

CHART B: Body of Shawl (begins with same sequence both side of center stitch)



Created in Knit Visualizer (www.knitfoundry.com)

CHART C: Scallop Edge
9 scallops on each side of shawl shown (18 total)

2 border stitches not shown: (RS) k2, (WS) k1, p1

Shawl begins the same on both sides of center stitch. (For instance if the row starts with a k2tog on right side of shawl, it will also begin with a k2tog on left side of shawl after center stitch.)

Set up:

Cast on 5 stitches

K1, MI(knit into front and back of stitch), MI, K2

GOTHIC REVIVAL SHAWL
BY LUCKY FIND SALVAGE COMPANY

Begin Chart A:

R1 (WS): purl on this and all wrong side (odd-numbered) rows.

R2 (RS): yo, k1, yo, ctr

R4: yo, k3, yo, ctr

R6: yo, k5, yo, ctr

R8: yo, k7, yo, ctr

R10: yo, k2, k tbl, yo, dbl dec, yo, k tbl, k2, yo, ctr

R12: yo, k2, k2tog, yo, k tbl, k1, k tbl, yo, ssk, k2, yo, ctr

R14: yo, k4, yo, k2tog, k1, ssk, yo, k4, yo, ctr

R16: yo, k2, yo, ssk, k1, yo, k2tog, k1, ssk, yo, k1, k2tog, yo, k2, yo, ctr

R18: yo, k2, ssk, yo, k2, k tbl, yo, dbl dec, yo, k tbl, k2, yo, k2tog, k2, yo, ctr

R20: yo, k3, ssk, yo, k1, k2tog, yo, k tbl, k1, k tbl, yo, ssk, k1, yo, k2tog, k3, yo, ctr

R22: yo, k1, k tbl, yo, dbl dec, yo, k tbl, k2tog, yo, k tbl, k3, k tbl, yo, ssk, k tbl, yo, dbl dec, yo, k tbl, k1, yo, ctr

R24: yo, k1, yo, ssk, k tbl, k1, k tbl, k2tog, yo, (k tbl) 2 times, yo, dbl dec, yo, (k tbl) 2 times, yo, ssk, k tbl, k1, k tbl, k2tog, yo, k1, yo, ctr

R26: yo, k2, k tbl, yo, ssk, k1, k2tog, yo, k tbl, k2tog, yo, k tbl, k1, k tbl, yo, ssk, k tbl, yo, ssk, k1, k2tog, yo, k tbl, k2, yo, ctr

R28: yo, ssk, yo, k2, k tbl, yo, dbl dec, yo, k tbl, k2, yo, k2tog, k1, ssk, yo, k2, k tbl, yo, dbl dec, yo, k tbl, k2, yo, k2tog, yo, ctr

R30: yo, k1, ssk, yo, k1, k2tog, yo, k tbl, k1, k tbl, yo, ssk, k1, yo, k2tog, k1, ssk, yo, k1, k2tog, yo, k tbl, k1, k tbl, yo, ssk, k1, yo, k2tog, k1, yo, ctr

R32: yo, k1, k2tog, yo, k3, yo, k2tog, k1, ssk, yo, k2, k tbl, yo, dbl dec, yo, k tbl, k2, yo, k2tog, k1, ssk, yo, k3, yo, ssk, k1, yo, ctr

R34: yo, k3, k tbl, yo, ssk, k1, yo, k2tog, k1, ssk, yo, k1, k2tog, yo, k tbl, k1, k tbl, yo, ssk, k1, yo, k2tog, k1, ssk, yo, k1, k2tog, yo, k tbl, k3, yo, ctr

R36: yo, k5, k tbl, yo, ssk, k tbl, yo, dbl dec, yo, k tbl, k2tog, yo, k tbl, k3, k tbl, yo, ssk, k tbl, yo, dbl dec, yo, k tbl, k2tog, yo, k tbl, k5, yo, ctr

Continue with Chart B

Repeat rows 38 through 64 of Chart B two times for size shown. **Two pattern stitch repeats added every 28 rows.** If making shawl bigger, end with Row 64 sequence before beginning scallops of **Chart C**.

End with stretchy bind-off.

GOTHIC REVIVAL SHAWL

BY LUCKY FIND SALVAGE COMPANY



Legend:



center

knit rs, purl ws



Stretchy Bind Off

K1 *k1, put 2 st back on L needle,



purl

purl stitch



knit tbl

Knit stitch through back loop



ssk

Slip one stitch as if to knit, Slip



k2tog

Knit two stitches together as one



Central Double Dec

Slip first and second stitches



knit

knit stitch

Created in Knit Visualizer (www.knitfoundry.com)

© 2008 Lucky Find Salvage Company. All Rights Reserved.